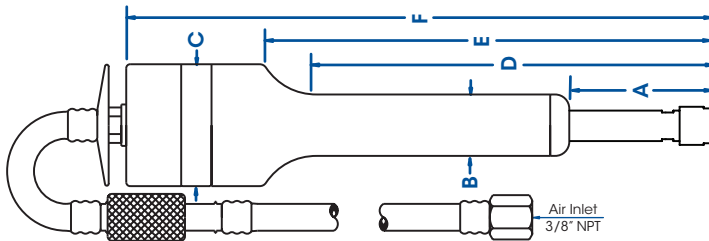
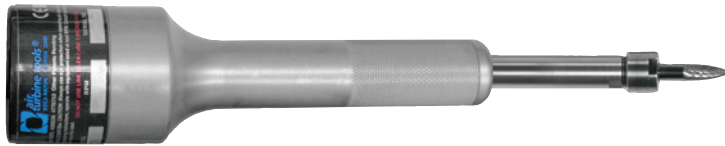


Reach deep cavities! The **525XSVE** delivers double turbine power combined with lightweight, low vibration, low noise for operator comfort. The **525XSVE** also provides greater accuracy and a finer high quality finish.

The constant high speed **525XSVE** enables you to work on hard-to-reach applications for fast removal or finishing - comfortably with a light touch directing the tool. At up to 0.80 hp (0.60 kW) high speed cutting action on your work piece is assured. Patented automatic brake option stops this tool in seconds.

Standard Equipment: Hand Tool, 1/4" or optional 6mm collet, collet wrenches, rear exhaust, exhaust deflector, 5' air supply assembly with slide valve and 3/8" NPT air supply fitting. Oil free 90 psi / 6.2 bar, clean, dry air supply required.

Dimensions



A	2.5" (63.5mm)	C	2.00" (50.80mm)	E	5.64" (143.26mm)
B	1.00" (25.40mm)	D	4.97" (126.24mm)	F	10.46" (265.68mm)

525XSVE Series

1/4"		6mm	
Speed RPM	Part #	Speed RPM	Part #
30,000	42562	30,000	42563

Accessories

Model	Part #
High Flow Filter	30004
High Flow Filter / Regulator	30003
High Flow Filter / Regulator / Extractor	30008

General Specifications

525XSVE

Speed RPM	30,000
Power Rating hp (kW)	0.80 (0.60)
Inlet Air Pressure	90 PSI (6.2 Bar)
Air Consumption Idle cfm (l/s)	19 (8.97)
Air Consumption Working Flow cfm (l/s)	22 (10.38) - 30 (14.16)
Sound Level	Less Than 67 dBA
Max Shank Capacity	1/4" (6mm)
Hand Tool Weight	27.9oz (0.79kg)

Vibration Statistics

Time to reach EAV 2.5 m/s² A(8)
12 hours, 32 minutes

Time to reach ELV 5 m/s² A(8)
50 hours, 8 minutes

Vibration magnitude m/s² r.m.s
2.00

Tel: +1.561.994.0500 • Fax: +1.561.994.8097 • www.airturbine.com • info@airturbine.com

Do not use couplings/hoses less than 1/4" / 6mm Internal Diameter (ID). With 230, 525X, and 3090 units use a minimum 3/8" / 9.5mm ID coupling/hose. For 230X units use a minimum 10mm ID coupling/hose. Always use a 5 micron filter and/or extractor where required and check specified PSI or L/S air flow. Use 6.2 Bar / 90 psi clean, dry, oil-free air only. Use eye protection and follow safety instructions. Supply is subject to Air Turbine Technology Inc. (ATT) distributor policies and upon terms contained in the ATT distributor agreement. Subject to availability, change of specifications, price and terms without notice. All specifications approximate.
© 2014 Air Turbine Technology, Inc. All rights reserved.