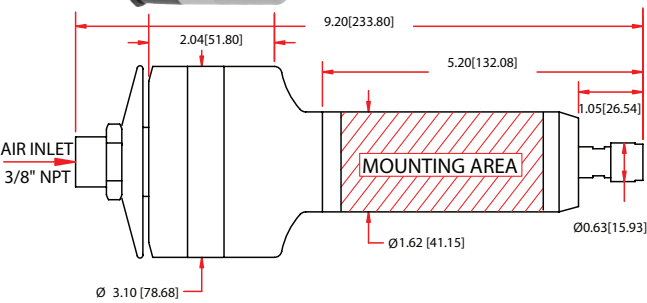
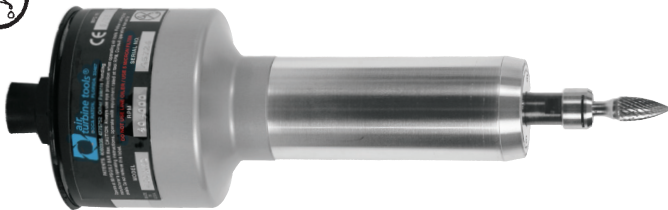


Super power, super rugged. Steel barrel for rigid mounting - plus durable front ceramic bearings standard. Cut faster and cleaner with no gears, no vanes, no brushes, and no oil. Direct drive governed Air Turbine Tools™ have less moving parts, less friction and therefore more durable for exacting applications.

Model 430XHD



1.4 hp
1.04 kW



1/4"		6mm	
Speed	Part #	Speed	Part #
25,000 rpm	34422	25,000 rpm	34423
30,000 rpm	34432	30,000 rpm	34433
40,000 rpm	34442	40,000 rpm	34443

Weight: 48 oz / 1.36 kg

Standard Equipment: Rego-Fix® Collet System, 1/4" or 6mm ER-11 collet, collet wrenches, rear exhaust, and 3/8" NPT air supply fitting. Ceramic bearings standard. Oil free 90 psi/6.2 bar dry, clean air supply required. Angular contact bearing option available.

General Specifications	 430XHD 		
	25,000	30,000	40,000
Speed RPM	25,000	30,000	40,000
Power Rating HP (KW)	1.2 (.90)	1.3 (.98)	1.4 (1.04)
Inlet Air Pressure	90 PSI (6.2 Bar)		
Air Consumption-Idle cfm (L/s)	16 (7.55)	17 (8.02)	18 (8.50)
Air Consumption-Working cfm (L/s)	19 (8.97) - 30 (14.2)		
TIR Collet Held Shank	Less than .001" (.03mm)		
Sound Level	Less than 67 dBA		
Standard Shank Capacity	1/4" (6mm)		

Accessories

	Part#
High Flow Filter /	
Regulator / Oil Extractor	30008
Mounted Point Kit	30055
Solid Carbide Burr Kit (1/4")	30058
Solid Carbide Burr Kit (6mm)	30059

