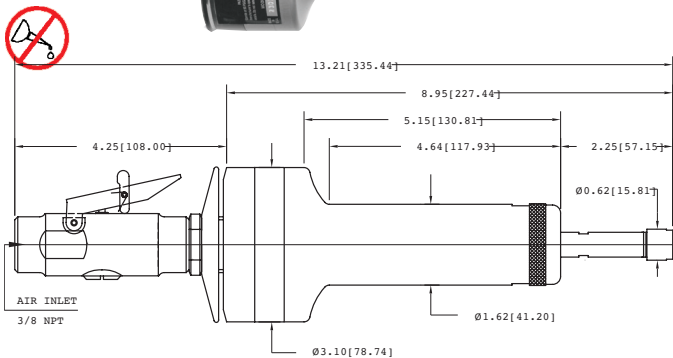
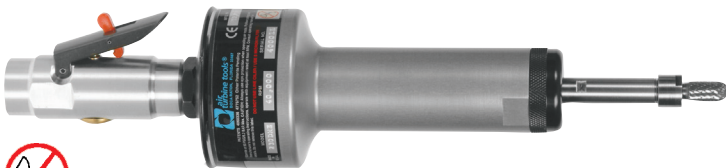


Heavy Duty removal with a light hand is made possible by our powerful motor combined with double front bearings. The **230DME** is a durable and effective solution to improve production, and cut costs. Low vibration and weight permit the operator to work with less stress and greater accuracy, cutting cleaner at high speeds. With no vanes or gears to repair, the 230DME is reliable as well as effective. Longer cutting tool life and a finer finish results from high peripheral spread cutting with a light hand.

Model 230DME

0.83 hp
0.62 kW





1/4"	
Speed	Part #
25,000 rpm	52760
30,000 rpm	52762

6mm	
Speed	Part #
25,000 rpm	52761
30,000 rpm	52763

Weight: 38.4 oz / 1.09 kg

Standard Equipment Included: 1/4" or optional 6mm collet, collet wrenches, rear exhaust, and 3/8" NPT air supply fitting. Oil free 90 psi / 6.2 bar dry, clean air supply required at rated CFM/LS. Do not use couplings or air hoses less than 1/4" / 6mm diameter.

General Specifications	 230DME 	
Speed RPM	25,000	30,000
Power Rating HP (KW)	0.76 (0.57)	0.83 (0.62)
Inlet Air Pressure	90 PSI (6.2 Bar)	
Air Consumption - Idle cfm (L/s)	13 (6.14)	14 (6.61)
Air Consumption - Working cfm (L/s)	14 (6.61) - 35 (16.0)	
TR Collet	Less than .001" (.03 mm)	
Sound Level	Less than 67 dBA	
Standard Shank Capacity	1/4" (6mm)	

Accessories

Accessories	Part#
High Flow Filter	30004
High Flow Filter / Regulator	30003
6' Air Supply Assy w/Fitting	30012
12' Air Supply Assy w/Fitting	30013